



# The International Association of Universities (IAU)

*The Global Voice of Higher Education*



INTERNATIONAL  
ASSOCIATION OF  
UNIVERSITIES

INTERNATIONAL UNIVERSITIES BUREAU

# The International Association of Universities

- Created in 1950 under the auspices of UNESCO
- An independent international Non-Governmental Organization
- An official partner of UNESCO, Associate Status and ECOSOC accredited
- Based at UNESCO headquarters in Paris



## Governance structure

- IAU President : Pam Fredman, Former Rector Gothenburg University, Sweden
- Executive Committee
- IAU Administrative Board – Full board Members and Deputy Board Members

**Membership:** 650 Members – universities and HEIs, Organisations, Affiliates, Associates from 130 countries around the world (Sept 2021)

[www.iau-aiu.net](http://www.iau-aiu.net)



# Vision & Mission

## VISION

- Be the most representative and influential global association of diverse higher education institutions and their organisations
- Promoting and advancing a dynamic leadership role for higher education in society

## MISSION

- To promote collaboration among its members
- To pursue the creation, dissemination and application of knowledge
- To advocate policy and practice that respect diversity and focus on equity and social responsibility
- To act as a forum for innovation, shared and mutual learning, and joint action



# IAU IN A NUTSHELL

## IAU Offers



Global Events



Advisory services

Training & peer-to-peer learning



Global advocacy & representation

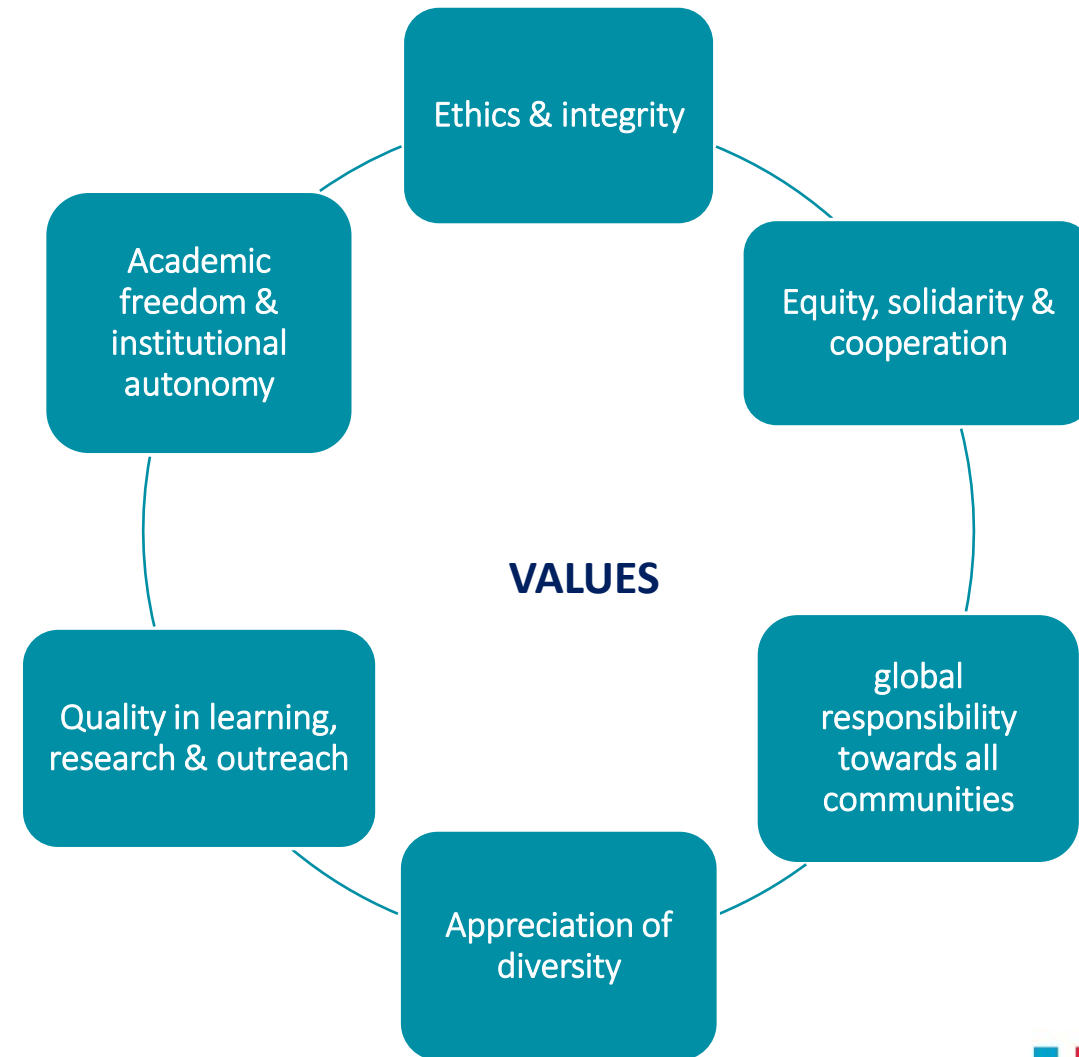


Research & trends analysis



Publications & specialized portals

IAU UNESCO WHED: [www.whed.net](http://www.whed.net)



INTERNATIONAL  
ASSOCIATION OF  
UNIVERSITIES

INTERNATIONAL UNIVERSITIES BUREAU

# 2016-2022 STRATEGIC PRIORITIES



Globally engaged  
Leadership



Higher Education  
and Research for  
Sustainable  
Development



Digital transformation of HE



Fair and inclusive  
Internationalization



# IAU WHED

The world of higher education at your fingertips

The unique database providing **authoritative information** on higher education systems, credentials and institutions worldwide



[www.whed.net](http://www.whed.net)



World  
Higher Education  
Database

in collaboration with



United Nations  
Educational, Scientific and  
Cultural Organization



INTERNATIONAL  
ASSOCIATION OF  
UNIVERSITIES

INTERNATIONAL UNIVERSITIES BUREAU



# WHAT IS THE WHED?

- WHED builds on the List of Higher Education institution and International Handbook of Universities (IHU) : 1948 - 2019)
- Now online: IAU World Higher Education Database (WHED), a Reference Portal
- Information on **higher education systems and credentials of 196 countries and territories and on 20,000 HEIs**
- HEIs listed are **accredited or recognized** by their respective national authorities
- WHED is a **vast source for HE information provided and used** by HE stakeholders across the globe for FREE

[www.whed.net](http://www.whed.net)



in collaboration with





# WHAT KIND OF INFORMATION is in the WHED?

## Education system and Credentials

**Fact sheet:** structure of national HE system and credentials including:

- **types of HEIs** available in the country
- **structure** of the higher education system
- **national bodies** responsible for higher education (including associations and organizations located within the country)
- **admission requirements**
- the **quality assurance** and **recognition systems**
- the **main credentials**

[www.whed.net](http://www.whed.net)

## Higher Education Institutions (HEIs)

**Fact sheet divided into 5 sections:**

- **General information**, including a unique identifier for each HEI
- **Key Contacts:** Heads of Institution and Senior Management Officers
- **Fields of Studies** and **Divisions**
- **Degrees** offered
- **Other:** e.g. Statistics and Publications



in collaboration with





# Sources



The WHED obtains its information from

- national higher education authorities
- governmental agencies
- UNESCO delegations
- other official sources

[www.whed.net](http://www.whed.net)



in collaboration with



# The UNESCO Global Convention on the Recognition of Higher Education Qualifications



## WHED: key resource for the implementation of the Global Convention:

- assembles information on national education systems required for recognition purposes on a global scale and includes **a list of all accredited universities** for reference
- is fully compliant with the Convention's call for **transparency** by adhering to strict selection criteria and relying on officially released lists
- gives **easy access to reliability of information** in a fair and transparent manner
- enhances **global academic mobility and international cooperation** in higher education
- supports **academic integrity, recognition and quality assurance** globally
- facilitates clear **identification and communication** within the global HE sectors and among government institutions
- provides greater **administrative certainty** while combating fraud



# FOR WHOM?

---

- Internationalisation and admissions offices at HEIs
- Governmental agencies and national authorities
- Higher education grant-awarding authorities
- Quality assurance agencies and credential evaluators
- International organisations
- Researchers and students (even parents)
- HR management and recruitment

[www.whed.net](http://www.whed.net)



# HOW?

---

- **Search** / Find the information you need through free access and search functions
- **Explore** / Research and analyse the higher education landscape
- **Extract** / Obtain customised data sets

[www.whed.net](http://www.whed.net)





“The Promise of Higher Education:  
Essays in Honour of 70 Years of  
IAU”

Open Access - <https://www.iau-aiu.net/>

## Special page **Impact COVID19 on HE**

<https://www.iau-aiu.net/Covid-19-Higher-Education-challenges-and-responses>

IAU Global Survey Report on Impact of COVID-19 on HE

[www.whed.net](http://www.whed.net)  
[www.iau-aiu.net](http://www.iau-aiu.net)

[Center@iau-aiu.net](mailto:Center@iau-aiu.net)



@iau\_aiu

@IAU\_HESD

