



# ASEMME<sup>6</sup> 2017 KOREA

## ASEMME<sup>6</sup> 2017 KOREA

**Collaboration for the Next Decade:**  
*from Common Perspectives  
to Effective Fulfillment*

### The 6th ASEM Education Ministers' Meeting

**21-22 November 2017**

SEOUL, THE REPUBLIC OF KOREA

**Collaboration for the Next Decade:**  
*from Common Perspectives  
to Effective Fulfillment*



교육부  
Ministry of Education



Asia-Europe Meeting



# ASEMME<sup>6</sup> 2017 KOREA

## The 6th ASEM Education Ministers' Meeting

21-22 November 2017

SEOUL, THE REPUBLIC OF KOREA

**Collaboration for the Next Decade:**

*from Common Perspectives  
to Effective Fulfillment*

## CONTENTS

### The 6th ASEM Education Ministers' Meeting

Invitation	2
Program	4
Discussion Document	5
PLENARY SESSION I	7
PLENARY SESSION II	9
The Seoul Declaration	11
ASEM Network of MOOCs Initiative	12
ASEM Partners and Stakeholders	13
Practical Information	15
Welcome and Introduction	15
Meeting Date and Venue	15
Registration	16
Bilateral Meetings and Working Group Meetings	16
Hospitality	17
Costs	18
Visa	18
Accommodation	18
Transportation from the Incheon International Airport	22
Meeting Venue Facilities and Services	25
Official Language	25
General Information about Seoul	25
Contact Information	29

# The 6th ASEM Education Ministers' Meeting

21-22 November 2017

Seoul, the Republic of Korea

Your Excellency,

It is my great privilege to invite you to the **6th ASEM Education Ministers' Meeting (ASEMME6)**, which will be held from **21 to 22 November 2017 in Seoul, Republic of Korea**. Prior to ASEMME6, the 2nd ASEM Education Senior Officials' Meeting (SOM2) will take place on 20 November 2017 to lay the foundation for the success of the ministerial meeting. The theme of ASEMME6 is *Collaboration for the Next Decade: from Common Perspectives to Effective Fulfillment*.

I am happy to join with you in what will serve as a great cause for celebration – the 10th year of the meeting of Asian and European education ministers for a stronger cross-regional cooperation. Inevitably, ASEMME6 will be a great occasion to take stock of how far the ASEM Education Process has come, and to set forth a new vision that will guide our collective efforts for another decade to come.

For the past 10 years, the ASEM Education Ministers' Meeting has greatly contributed to promoting the connectivity between Asia and Europe. At the 11th ASEM Summit, which was held in Mongolia from 15 to 16 July 2016 in celebration of the 20th

anniversary of ASEM, the Heads of State and Government yet again underscored the importance of education in promoting people-to-people connectivity between the two continents. In the coming November, the Republic of Korea will strive to contribute to the development of education cooperation in ASEM through proposing the adoption of “Seoul Declaration,” an embodiment of both a decade-long progress and a collective vision for the next decade, while presenting a set of future-oriented plans for further enhancing the connectivity between Asia and Europe.

I very much look forward to meeting you at ASEMME6 in Seoul, where we will not only discuss ways to lay out a new landscape for a closer cooperation between Asia and Europe, but also to further expand the bilateral cooperation in the field of education between Korea and your country.

Please kindly note that the online registration for ASEMME6 and SOM2 will be open until **31 October 2017** at the official website, <http://asemme6.kr>

Should you have any questions, please do not hesitate to contact Mr. Nam Yoonchul (+82 44 203 7056, [asemme6@moe.go.kr](mailto:asemme6@moe.go.kr)).

Yours sincerely,



Kim Sang-kon  
Deputy Prime Minister and Minister of Education  
Republic of Korea

## Tentative Program

*last updated : 24 August 2017*

*20 November 2017*

### The 2nd Senior Officials' Meeting (SOM2)

08:30-11:00	Registration
09:00-11:00	Bilateral Meeting
11:00-11:20	<b>Welcoming Speeches</b>
11:30-12:00	Family Photo
12:00-13:00	<b>Seoul Declaration: Presentation and Discussion</b>
13:00-14:00	Lunch
14:00-15:30	<b>Chair's Conclusions: Presentation and Discussion</b>
15:30-16:00	Coffee Break
16:00-18:00	<b>Presentation of ASEM partners and stakeholders</b>
18:30-20:30	Dinner

*21 November 2017*

### The 6th ASEM Education Ministers' Meeting - DAY 1

08:30-12:00	Registration
09:00-12:00	Bilateral Meeting
12:00-13:30	Lunch
14:00-14:40	<b>Welcoming Speeches</b> <b>Introduction Speech</b>
14:40-15:20	Family Photo
15:20-17:20	<b>Plenary Session I</b> <i>Collaboration for the Next Decade-Improving Youth Employability</i>
17:20-17:50	Coffee Break
18:30-20:30	<b>Formal Dinner</b>

*22 November 2017*

### The 6th ASEM Education Ministers' Meeting - DAY 2

09:00-11:00	<b>Plenary Session II</b> <i>Collaboration for the Next Decade-Promoting Mobility and People-to-people connectivity</i>
11:00-11:30	Coffee Break
11:30-12:00	<b>Seoul Declaration and Chair's Conclusions : Presentation and Adoption</b>
12:00-12:35	Other Matters <b>Closing Remark</b>
12:35-13:00	<b>Press Conference</b>
13:00-14:00	Lunch
14:30-17:00	<b>Site Visit</b> Bilateral Meeting

## Discussion Document

As characterized by its nature of informality, networking and flexibility, the ASEM Education Ministers' Meeting (ASEMME) offers a unique platform for cooperation in education between and within Asia and Europe. Focusing on dialogue and mutual understanding based on common perspectives between the two regions, ASEM education cooperation has constantly evolved during the past 10 years. We are now facing a new decade ahead of us. Now is the best time to review the achievements of the past decade, and envision the next decade of the ASEM Education Process.

In the past decade, ASEM education cooperation has never stopped evolving. As a unique platform for inter-regional and intra-regional education cooperation, it took its first step based on the common perspectives in Asia and Europe (ASEMME1, Berlin), and then started to play a key role in sharing experience and best practices in higher education (ASEMME2, Hanoi). In order to advance and deepen the cooperation, ASEM education priority areas were shaped (ASEMME3, Copenhagen), and strategic collaboration was emphasized to strengthen the ASEM Education Process (ASEMME4, Kuala Lumpur). Recently, two-pillar system – dialogue-oriented and result-oriented systems – was introduced into the process to promote collaboration for results (ASEMME5, Riga).

In the next decade, the pace of change will only accelerate and the world will become more complex with the wave of the Fourth Industrial Revolution. The convergence across the physical, digital and human worlds driven by the new wave will blur the lines between national borders, between social sectors, and between online and offline worlds. Against this backdrop, we will live in a more intertwined world, where a challenge of a single country contagiously becomes a challenge for all, and where vast gaps in technological advancement and individual adaptability among countries exacerbate global inequality, especially in education and employment. Our collective wisdom on the challenges before us, therefore, is required and emphasized more than ever before. Furthermore, since creative problem-solving abilities as well as social and emotional intelligence are viewed as high-priority skills especially in the near future, developing those skills will be critical for tomorrow. Thus, new approaches and renewed relevance should be acquired in ASEM education Process.

The 11th ASEM Summit held in Mongolia in 2016 emphasized more tangible cooperation in all dimensions between the two regions. The survey conducted prior to ASEMME6 also shows that ASEM education cooperation should now focus more on producing outcome and tangible cooperation. Tangibility and visibility in the ASEM Education Process can be achieved by effectively responding to the demands of the new era. In addition to the cooperation based on dialogue from common perspectives, we should lead our collaboration to ensure effective fulfillment of future demands in the next decade. Recognizing the objectives, the Ministry of Education of the Republic of Korea proposes 'Seoul Declaration' to envision a renewed education cooperation in ASEM for the next decade, and will host the 6th ASEM Education Ministers' Meeting (ASEMME6) with the theme, *Collaboration for the Next Decade: From Common Perspectives to Effective Fulfillment*.

## **PLENARY SESSION I**

### **Collaboration for the Next Decade – Improving Youth Employability**

*15:20 - 17:20, 21 November 2017*

#### **ASEM Education Priority Areas:**

- Engaging Business and Industries in Education
- Lifelong Learning including Technical and Vocational Education and Training (TVET)

The World Economic Forum reports that 7.1 million jobs will disappear while 2 million jobs will be created over the period 2015-2020 (*The Future of Jobs Report*, 2016). Fundamental change in the demands of the labor market is underway, but the

direction is uncertain, and the pace is too fast to catch up with. The changes and challenges in the labor market will expand the gap between graduates' job skills and the demands of the market. Making higher education more relevant to the labor market, therefore, is highly necessary to resolve the issue of rising youth unemployment. The survey conducted prior to ASEMME6 also reports that "improving skills and competencies in accordance with the changes in the labor market" will emerge as the most important task for the ASEM Education Process in the coming decade.

Since employability is sensitive to changes in economic and social environment, higher education should increase its relevance and credibility to meet the demands of industries. Thus, the growing importance of the industry-relevant higher education will demand that higher education sector play a key role in both promoting youth employability and preparing the future graduates for the coming era. According to the demands, new changes and challenges will be introduced into all dimensions of higher education, including curricula, tools for learning, approaches to teaching and learning, student evaluation, as well as faculty recruitment.

In addition to higher education, lifelong learning, including technical and vocational education and training (TVET), is a significant component for ensuring the sustainability of individuals and the socio-economic system. Re-skilling and up-skilling of individuals will be critical. Connecting individuals' skills development with productivity and social adaptability will be essential to increase individuals' employability in the next decade. In recognition of these changes and challenges, at the plenary session I, we will share our opinions and best practices on how to enhance youth employability in Asia and Europe for the future of ASEM education cooperation.

- *To renew the relevance of academic-business cooperation and enhance its credibility, what strategies and policies are required in the ASEM Education Process?*
- *To promote individuals' sustainability, productivity, and social adaptability in the era of the 4th Industrial Revolution, what is the role of lifelong learning, including TVET, in ASEM education cooperation?*

## PLENARY SESSION II

### **Collaboration for the Next Decade – Promoting Mobility and People-to-People Connectivity**

*09:00 – 11:00, 22 November 2017*

#### **ASEM Education Priority Areas:**

- Quality Assurance and Recognition
- Balanced Mobility

Mobility is essential in ASEM education cooperation. With geographical, historical, and cultural diversity, people-to-people contact brings about shared common perspectives and improves mutual understanding. Since only human beings are capable of conversing with others to share ideas based on knowledge and experience, the process of connecting two regions would both begin with and be completed by human interactions. Furthermore, the movement of people is one of the most tangible and visible cooperation. The survey for ASEMME6 reports that "the promotion of human resources exchange" has been one of the most significant contributions of the ASEM Education Process in the past decade and should continue to be pursued in the next decade.

Increasing international mobility in the higher education sector raises concerns for compatibility and comparability of qualifications among different higher education systems in Asia and Europe. The facilitation of cross-regional compatibility and comparability of higher education systems will eventually bring about more opportunities for students, teachers and staff to be exposed to foreign education, which will lead to more active cross-border mobility of people. However, not only the size of cross-border mobility, but also its direction is important. Balanced mobility should be valued as a means of promoting better connectivity in education between the two regions because it contributes both to the European understanding of Asia and the Asian understanding of Europe. Furthermore, from the perspective of human resource development, the strategy of facilitating the cross-border flow of people will be crucial for responding to the demands of an ever-expanding global market. The more interconnected and interdependent the world becomes, the greater the necessity of global talents and skills, which can be promoted by greater international mobility.

The recent development of technology has given rise to virtual mobility. The e-learning market worldwide was worth \$144.8 billion in 2016, and is projected to grow to \$241.5 billion by 2022 (*Global Industry Analysts*, 2016). Online education is a global phenomenon. As the way education is delivered changes, the way people interact with one another will also change, affecting the overall people-to-people exchange. At the plenary Session II, we will share our opinions and best practices on how to promote mobility to enhance people-to-people connectivity between Asia and Europe.

- *With the online education market rapidly growing around the world, would the promotion of international mobility of people still be relevant in this new era? If so, how should online*

*education tools and platforms (e.g. MOOCs) be used to promote the movement of people between the two regions?*

- *Given the fact that not only governments but also professional bodies, institutions, and organizations play a critical role in the global exchange of people, what strategies among those actors should be adopted to both increase the people-to-people exchange and to promote balanced mobility?*

## The Seoul Declaration

The year 2017, in which the 6th ASEM Education Ministers' Meeting (ASEMME6) is planned to be held, marks the 10th year of the gathering of Asia and Europe education ministers. At ASEMME6, as the host country, the Republic of Korea hopes to play a role as a facilitator for the adoption of the Seoul Declaration, a ministerial statement designed to look back on the footsteps of ASEMME6 for the past 10 years and to further discuss the future direction of education cooperation within ASEM for the next decade.

The Seoul Declaration will be the first ministerial declaration to be adopted since the inception of ASEMME. Korea hopes that it contains the aspirations of all ASEM members, rather than serving as a wish list for only a few member countries. In this regard, its draft is now being jointly written by the Draft Committee comprising representatives from diverse ASEM member countries.

Korea hopes that the Seoul Declaration will ultimately contribute to the promotion of connectivity between Asia and Europe – one of the most important goals of ASEM as a



whole – but especially to the advancement of people-to-people connectivity – a goal that ASEMME puts particular emphasis on. To increase connectivity within ASEM, its members first need to think about how to deal with their common challenges together. In this regard, measures to jointly respond to issues surrounding the emergence of the 4th Industrial Revolution – such as the problem of youth unemployment – should be included in the Seoul Declaration. Moreover, balanced people-to-people exchange between Asia and Europe should be promoted further in the coming decade.

## ASEM Network of MOOCs Initiative

Korea hopes to advocate the MOOCs Initiative – a new concept within the ASEM Education Process. In a time when the use of ICT is expanding by the day, it only stands to reason that ASEM members discuss about how to make better use of ICT within the realm of education in the coming era.

The MOOCs Initiative will take the form of an inter-regional consultative body of experts that, for the first time in the history of ASEMME, connects Asia and Europe under the theme of MOOCs. The products of this Initiative will serve as a pleasant and constructive stimulant to ASEMME6, invigorating the discussions at the ministerial meeting in November. In fact, in April 2017, the 1st ASEM MOOCs Stakeholders' Meeting was held in Korea, receiving highly enthusiastic response from the participants.

The MOOCs Initiative will ultimately contribute to the joint production of MOOCs content in the field of higher education by Asia and Europe, development of relevant guidelines, and provision of networking opportunities for experts.

## ASEM Partners and Stakeholders

### ASEM 53 Partners

ASEAN Secretariat	Lao PDR
Australia	Latvia
Austria	Lithuania
Bangladesh	Luxembourg
Belgium	Malaysia
Brunei Darussalam	Malta
Bulgaria	Mongolia
Cambodia	Myanmar
China	Netherlands
Croatia	New Zealand
Cyprus	Norway
Czech Republic	Pakistan
Denmark	Philippines
Estonia	Poland
European Commission	Portugal
Finland	Romania
France	Russian Federation
Germany	Singapore
Greece	Slovakia
Hungary	Slovenia
India	Spain
Indonesia	Sweden
Ireland	Switzerland
Italy	Thailand
Japan	United Kingdom
Kazakhstan	Vietnam
Republic of Korea	



## Stakeholders

Asia-Europe Foundation (ASEF), the ASEM Lifelong Learning Hub (ASEM LLL Hub), ASEAN University Network (AUN), the European Network for Quality Assurance in Higher Education (ENQA), the European Student Union (ESU), the European University Association (EUA), the European Association of Institutions in Higher Education (EURASHE), the Organization for Economic Co-operation and Development (OECD), the United Nations Educational, Scientific and Cultural Organization (UNESCO), UNESCO-UNEVOC International Centre for Technical and Vocational Education and Training, the Southeast Asian Ministers of Education Organization's (SEAMEO) Regional Centre for Vocational & Technical Education & Training (VOCTECH).

Experts meet regularly to share experiences, present examples of good practice, and contribute to policy discussions and the implementation of reform measures. Most initiatives for bringing these experts together are taken by different ASEM member states with the support of the AES. Valuable input is also given by ASEF's ASEM Education Hub (AEH) through the ASEM Rectors' Conference (ARC), Asia-Europe Education Workshops, and the ASEM Education and Research Hub for Lifelong Learning (ASEM LLL Hub).

## Practical Information

### 1. Welcome and Introduction

The Republic of Korea warmly welcomes the participants of the 6th ASEM Education Ministers' Meeting (ASEMME6) and the 2nd Senior Officials' Meeting (SOM2). The Task Force for ASEM Education Ministers' Meeting, the Ministry of Education of the Republic of Korea is committed to providing delegates with the most successful meeting programs and enjoyable time in Seoul.

### 2. Meeting Date and Venue

#### The 6th ASEM Education Ministers' Meeting (ASEMME6)

**21-22 November 2017**

**Hotel Shilla**

Please note that the **2nd Senior Officials' Meeting** will take place on **20 November 2017** (a day before ASEMME6) at **the same venue (Hotel Shilla)**.



### 3. Registration

Online registration for the 6th ASEM Education Ministers' Meeting (ASEMME6) is open on **the ASEMME6 website** ([www.asemme6.kr](http://www.asemme6.kr)) **until 31 October 2017**.

Delegates are encouraged to visit the ASEMME6 website and fill in the registration form as soon as possible to make sure there is enough time for all the necessary travel arrangements to be made. To ensure timely distribution of relevant information, delegates are kindly asked to nominate the contact person during the registration process. **Suggested size of the delegation for SOM2 is two delegates; for ASEMME6 is the Minister and two delegates.**

Participants will be able to collect their identification badges at the registration desk at the venue (Hotel Shilla). Please note that the access to the meeting rooms will be restricted to those wearing their identification badges.

Please do not hesitate to contact us should you have any questions about registration: [asemme6@moe.go.kr](mailto:asemme6@moe.go.kr).

### 4. Bilateral Meetings and Working Group Meetings

Meeting rooms will be provided for those who would like to have bilateral or working group meetings during SOM2 and ASEMME6. **They are kindly invited to make a meeting room reservation on the ASEMME6 website** ([www.asemme6.kr](http://www.asemme6.kr)) **no later than 31 October 2017**.

Please take into account that the meeting rooms will be assigned on a **first-come, first-served basis**. In case of cancellation of the meeting, the notification should be immediately sent to the Task Force for by e-mail: [asemme6@moe.go.kr](mailto:asemme6@moe.go.kr)

### 5. Hospitality

All delegates are cordially invited to join:

- **Formal Dinner** at *Dynasty Hall, Hotel Shilla* on **21 November 2017**
- **Site visit** to the *National Museum of Korea* on **22 November 2017**

#### National Museum of Korea



The National Museum of Korea is a Korean history and art museum, which owns over 240 thousand cultural heritage of Korea. Since its establishment in 1945, the Museum has been offering a fascinating journey through thousands of years of history, from the Paleolithic Age, to the Three Kingdoms Period, Goryeo Dynasty, Joseon Dynasty, and modern times. The Museum's major collections include "Pensive Bodhisattva" from the Three Kingdoms Period (7th Century), as well as Gold Crown from Silla Kingdom (5th Century) and Ten-story Pagoda of Gyeongcheonsa Temple from Goryeo Dynasty (14th Century). Along with the Korean cultural heritage, the museum also presents Asian artifacts from China, Japan, Southeast and Central Asia.

**Spouses' Program:** The Task Force for ASEM Education Ministers' Meeting provides a separate cultural program on **21 November 2017** for accompanying spouses of the Ministers and Vice-Ministers attending ASEMME6. In order to ensure that, please fill the online registration and check "Spouses' program".

## 6. Costs

The Ministry of Education of the Republic of Korea will provide the venue for SOM2, ASEMME6, and related meetings, as well as coffee breaks, lunches, formal dinner and site visit. The participants will bear the costs for accommodation, travel expenses and possible visa costs.

## 7. Visa

Visa application fees are to be covered by participants themselves. The information of visa application can be found on the following link: [http://www.mofa.go.kr/ENG/visa/application/index.jsp?menu=m\\_40\\_10](http://www.mofa.go.kr/ENG/visa/application/index.jsp?menu=m_40_10)

More information on visa can be found on the following link: <http://www.visa.go.kr>

## 8. Accommodation

The Task Force for ASEM Education Ministers' Meeting has made a block reservation at the designated hotels at special rates. **Delegates may download a reservation form on the ASEMME6 website ([www.aseemme6.kr](http://www.aseemme6.kr)) and send a completed form to the respective hotel email addresses.** The following accommodation options are available:



\* Shuttle Bus Services will be provided for ASEMME6 participants from the hotels (Grand Ambassador Seoul, KY-Heritage Hotel, and the Summit Hotel Seoul) to the venue (Hotel Shilla) every morning during the meeting. KAL Limousine Bus No. 6702 stops at all of the four listed hotels

Hotel	Room Type	Room Rate per room/night (including breakfast and VAT & SVC)
Hotel Shilla, 5***** (Venue of the meeting)	Deluxe	KRW 302,500
	Business Deluxe	KRW 363,000
Grand Ambassador Seoul, 5***** (7 min. by walk from the venue)	Superior King	KRW 192,500
	Deluxe King	KRW 216,700
KY-Heritage Hotel, 4**** (12 min. by walk from the venue)	Standard King	KRW 121,000
	Deluxe King	KRW 132,000
	Deluxe Twin	KRW 143,000
The Summit Hotel Seoul, 4**** (10 min. by walk from the venue)	Standard Double	KRW 110,000
	Standard Twin	KRW 110,000
	Deluxe Twin	KRW 132,000

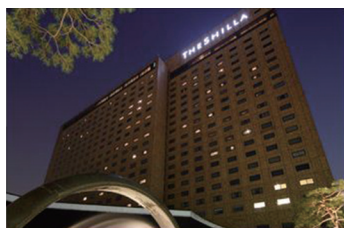
## Hotel Shilla

249, Dongho-ro, Jung-gu, Seoul 100-856, Republic of Korea

Tel : +82-2-2233-3131 | Fax : +82-2-2230-3769

Website : <http://www.shilla.net/seoul>

E-mail : [shilla.reserve@samsung.com](mailto:shilla.reserve@samsung.com)



Complimentary use of the fitness club and indoor swimming pool  
Charged service for the use of the sauna  
Free parking during stay  
Charged baby-sitting service

55-inch Smart TV (Satellite TV, 52 channels)  
Free high-speed wired and wireless internet  
Both 220V and 110V available  
Complimentary teabags

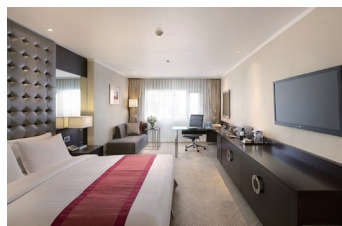
## Grand Ambassador Seoul associated with Pullman

287, Dongho-ro, Jung-gu, Seoul 04618, Republic of Korea

Tel : +82-2-2275-1101 | Fax : +82-2-2272-0773

Website : <http://www.grand.ambatelen.com>

E-mail : [ambres@ambatel.com](mailto:ambres@ambatel.com) (CC: [ambmice2@ambatel.com](mailto:ambmice2@ambatel.com))



Complimentary use of the fitness club  
Complimentary use of indoor swimming pool  
Charged service for the use of the sauna  
Free parking during stay

40-inch LCD TV (Satellite TV, 62 channels)  
Free high-speed wired and wireless internet  
Both 220V and 110V available  
Two Nespresso Coffee Capsules per day  
Extra Bed: KRW 60,500 per bed/night

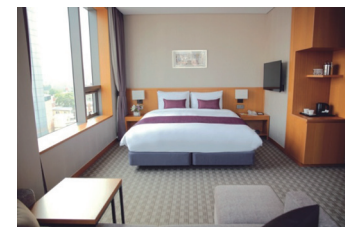
## KY-Heritage Hotel Dongdaemun

226, Jangchoongdan-ro, Jung-gu, Seoul, 04565 Korea

Tel : +82-2-2198-1212 | Fax : +82-2-2268-3067

Website : [www.ky-heritagehotel.com](http://www.ky-heritagehotel.com)

E-mail : [rsvn@ky-heritage.com](mailto:rsvn@ky-heritage.com)



Free use of fitness center (24-hour)  
24-hour fully-equipped business center  
Nearest Subway St.: Dongdaemun History & Culture Park St., Line 2, 4, and 5

Premium bedding set  
40-inch LED TV (60 satellite and cable channels)  
Free wireless internet  
Complimentary mineral water, coffee & tea set

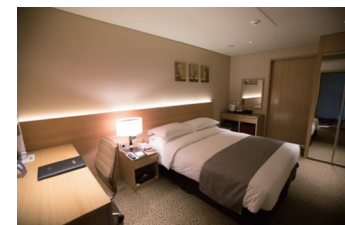
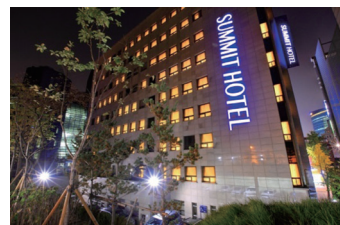
## The Summit Hotel Seoul

31-7, 1Ga, Jangchung-dong Jung-gu, Seoul, 100-391, Republic of Korea

Tel : +82-2-2285-0540 | Fax : +82-2-2285-0549

Website : <http://www.summithotelseoul.com>

E-mail : [rsv@summithotelseoul.com](mailto:rsv@summithotelseoul.com)



Complimentary use of the fitness club  
Complimentary use of the business center  
Free parking for in-house guests

32-inch LED TV (Satellite TV, 45 channels)  
Free high-speed wired and wireless internet  
Complimentary mineral water, coffee and tea  
Extra Bed: KRW 33,000 (10% tax included)

Delegations will be responsible for all costs related to the accommodation during their stay. Should you have queries related to accommodation, please do not hesitate to contact directly the respective hotel or send an email to [asemme6@moe.go.kr](mailto:asemme6@moe.go.kr).

## 9. Transportation

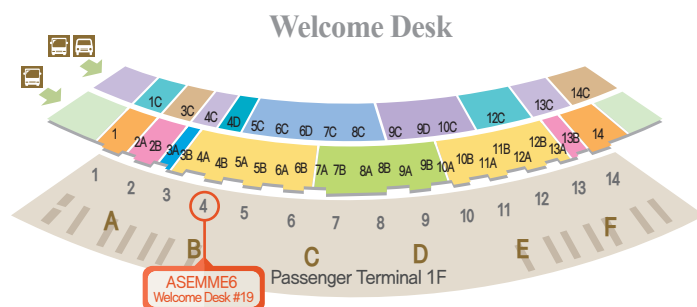
*from the Incheon International Airport*

01

### Travel Services for Delegates

- Airport Welcome Desk #19, open on 18-21 November 2017
- Pre-arranged car service, 19-21 November 2017
- KAL Limousine Bus ticket (if needed), 18-21 November 2017

Ministers and Vice-Ministers will be taken to the hotels by liaison officers. A pre-arranged car service from Incheon International Airport is provided to all registered delegations arriving on 19-21 November 2017. Delegates who would like to use public transportation are offered a free one-way KAL Limousine Bus ticket at the Airport Welcome Desk #19 (located at Gate 4 on the 1st floor). Please note that the Welcome Desk #19 will be open on 18-21 November 2017.



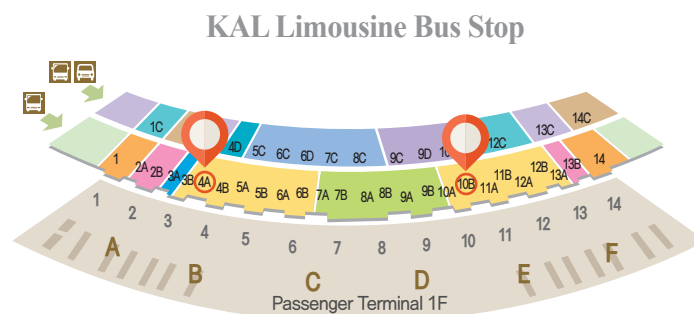
02

### Public Transportation

#### By KAL Limousine Bus

KAL Limousine Bus provides the most convenient mode of transportation from the airport to the venue (Hotel Shilla) and the other listed hotels. Four of the hotels including the venue are on the route of KAL Limousine Bus (**No. 6702**). The bus stop is located at **Exit No. 4A or Exit No. 10B** on the 1st floor. The journey takes about 70~90 minutes, depending on the traffic conditions. The Bus fare is **KRW 16,000** per person.

Tickets will be available from the guide at the bus stop or the KAL Limousine counter located in the arrival hall between Exit No. 4 and No. 5. Credit card can be used at KAL Limousine counter.

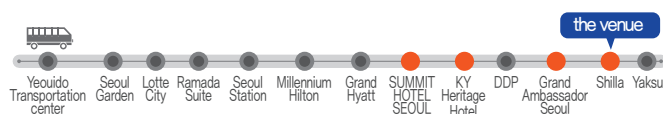




Departure Time (Exit No. 4A)					
5:10	6:00	6:47	7:20	7:51	8:20
8:52	9:27	9:54	10:28	10:54	11:24
11:55	12:23	12:55	13:21	13:55	14:25
14:53	15:21	15:55	16:25	16:55	17:19
17:49	18:16	18:44	19:15	19:41	20:14
20:44	21:15	21:44	22:13	22:44	

Please NOTE : The Departure Time at Exit No. 10B is 4 minutes later than Exit No. 4A.

### The route of the KAL Limousine Bus (No. 6702, Mt. Namsan Area)



Participants can find more information about KAL Limousine Bus schedule on the following website :

[http://www.kallimousine.com/eng/schedule\\_en.asp](http://www.kallimousine.com/eng/schedule_en.asp)

#### By Taxi

Deluxe Taxi : about one hour  
(approx. KRW 100,000 – toll fees included)

Standard Taxi : about one hour  
(approx. KRW 70,000 – toll fees included)

## 10. Meeting Venue Facilities and Services

### 01

#### IT Services and Support

A business center equipped with PCs, printers, and copy machines will be set up at the meeting venue for ASEMME6 participants. Wi-fi service will be available at all meeting areas at Hotel Shilla.

### 02

#### Prayer Room

A prayer room will be available at Hotel Shilla.

## 11. Official Language

The official working language of ASEMME6 and SOM2 is English. Any interpretation/translation service will not be provided. In case interpretation is required, it is requested that a whispering interpreter be included in your delegation and the Task Force for ASEM Education Ministers' Meeting be informed.

## 12. General Information about Seoul

### 01

#### Weather

The Republic of Korea is characterized by four distinct seasons: spring, summer, autumn, and winter. November

in Seoul is late autumn where the weather is chilly with the average temperature of 7.1°C. During the day, the temperature can increase up to 15.3°C, whereas it can be cold during the morning and evening (-2°C~6°C).

More information on the weather can be found at the following link: <http://web.kma.go.kr/eng/index.jsp>

## 02

### Time

The Republic of Korea is on the Korean Time Zone (UTC/GMT+9:00) and does not observe daylight saving time.

## 03

### Mobile Phones Information

CDMA cellular systems are widely used in the Republic of Korea. SK Telecom, KT and LG U+ are providing a SIM card roaming service to allow participants to use their GSM subscription in the Republic of Korea. At the Incheon International Airport, participants can rent a special CDMA cellular phone which accepts your SIM card. For more details, please check the following links:

SK Telecom roaming service:

<http://www.sktelecom.com/en/main/index.do>

KT roaming service:

<http://roaming.kt.com/renewal/eng/main.asp?channel>

LG U+ roaming service:

<http://www.uplus.co.kr/com/main/pemain/Pemain.hpi>

## 04

### Power Supply



The standard power supply in the Republic of Korea is **220 volts at 60 Hz**. This power socket can be identified by two circular adjacent holes. An adaptor for the round two-pin sockets may be required.

## 05

### ATMs and Credit Cards

There are many automatic teller machines (ATMs) in Seoul and all major credit cards are accepted almost everywhere. Cards with the Plus and Cirrus logos are the easiest to use at ATMs and most widely accepted in Korea.

## 06

### Foreign Exchange and Banking

There are plenty of places in Seoul to exchange currencies, including airports, banks, authorized currency exchanges and major hotels. The monetary unit is the "won" (KRW, denoted by ₩). Korean monetary units are 10, 50, 100, and 500 coins, and 1,000, 5,000, 10,000 and 50,000 notes. All major credit cards such as American Express, Visa and Master Card are accepted for payment of hotel bills. Banks are open from 09:00 to 16:00 on weekdays and closed on Saturdays and Sundays.

10 July 2017

Exchange Rate	
USD 1	KRW 1,149.10
EUR 1	KRW 1,310.61
JPY 100	KRW 1,006.70
CNY 1	KRW 168.95



## 07

### BBB (Before Babel Brigade): Volunteer Interpretation Service

Whenever and wherever you encounter communication problems in Koreans, just call 1588-5644 and press a number for your preferred language. Your call will be quickly connected to a BBB volunteer's mobile phone through an automated switchboard, and you will soon receive interpretation service. The service is available in 19 languages: English, Chinese, Japanese, French, Spanish, Italian, Russian, German, Portuguese, Arabic, Polish, Turkish, Swedish, Thai, Vietnamese, Indonesian, Mongolian, Hindi and Malaysian. More information on the service can be found on the website: <http://www.bbbkorea.org>.

## 08

### Useful Numbers

Country code for the Republic of Korea: +82  
 Area code for Seoul: 02  
 Emergency: 112 (police), 119 (fire and medical emergency)  
 Travel: 02-1330 (Korea Travel Hotline)

International call: the international access code (001, 002 or 008) + country code + area code + the recipient's number

## 09

### Useful Websites

Ministry of Education of the Republic of Korea:  
<http://english.moe.go.kr>  
 Incheon International Airport:  
<http://airport.kr/pa/en/a/index.jsp>  
 Useful information about Seoul:  
<http://english.visitseoul.net>  
 Gateway to Korea:  
<http://www.korea.net>

## 13. Contact Information | ASEMME6 KOREAN TEAM

**Oh Eungseok** Director  
 Task Force for ASEM Education Ministers' Meeting  
 Phone: +82-44-203-7055  
 E-mail: [asemme6@moe.go.kr](mailto:asemme6@moe.go.kr) ; [esoh72@moe.go.kr](mailto:esoh72@moe.go.kr)

**Nam Yoonchul** Deputy Director  
 Task Force for ASEM Education Ministers' Meeting  
 Phone: +82-44-203-7056  
 E-mail: [asemme6@moe.go.kr](mailto:asemme6@moe.go.kr) ; [nyc111@moe.go.kr](mailto:nyc111@moe.go.kr)

**Ahn Heejeong** Deputy Director  
 Task Force for ASEM Education Ministers' Meeting  
 Phone: +82-44-203-7057  
 E-mail: [asemme6@moe.go.kr](mailto:asemme6@moe.go.kr) ; [aidreamu@korea.kr](mailto:aidreamu@korea.kr)

**Hong Suneui** Assistant Director  
 Task Force for ASEM Education Ministers' Meeting  
 Phone: +82-44-203-7058  
 E-mail: [asemme6@moe.go.kr](mailto:asemme6@moe.go.kr) ; [riff45@moe.go.kr](mailto:riff45@moe.go.kr)

**Kim Jiwon** Assistant Director  
 Task Force for ASEM Education Ministers' Meeting  
 Phone: +82-44-203-7059  
 E-mail: [asemme6@moe.go.kr](mailto:asemme6@moe.go.kr) ; [minnie25@korea.kr](mailto:minnie25@korea.kr)

**Kwon Jiyeon** Program Specialist  
 Task Force for ASEM Education Ministers' Meeting  
 Phone: +82-44-203-7061  
 E-mail: [asemme6@moe.go.kr](mailto:asemme6@moe.go.kr) ; [jkwon710@moe.go.kr](mailto:jkwon710@moe.go.kr)

Should you have any questions, please do not hesitate to contact  
**Mr. Nam Yoonchul** ([asemme6@moe.go.kr](mailto:asemme6@moe.go.kr) ; [nyc111@moe.go.kr](mailto:nyc111@moe.go.kr)).