

**ASEM INTERNATIONAL SEMINAR ON LIFELONG LEARNING, ASEM INTERNATIONAL
SEMINAR ON BALANCED MOBILITY & ASEM DIALOGUE ON QUALITY ASSURANCE AND
RECOGNITION 2014**

***“Strategizing Collaboration, Leveraging Resources: Charting the Way Forward for
Lifelong Learning, Balanced Mobility and Quality Assurance & Recognition”***

PROGRAMME
25 & 26 August 2014
PWTC, Kuala Lumpur, Malaysia
<http://asem-education-secretariat.kemdikbud.go.id/>

TABLE OF CONTENTS

SECTION I: WELCOME

Foreword by Minister of Education Malaysia	3
Foreword by Director ASEM Education Secretariat	5
Preface by Secretary General II, Ministry of Education Malaysia	6

SECTION II: SEMINAR/DIALOGUE INFORMATION

Seminar/Dialogue in Brief	7
Seminar/Dialogue Highlights	9
Seminar/Dialogue Support Services and General Information	10
Daily Schedule	16

SECTION III: A SNAPSHOT OF MALAYSIA'S EDUCATION

Ministry of Education	25
Malaysia Education Blueprint	25
National Higher Education Strategic Plan	26

SECTION IV: ACKNOWLEDGMENT

29

FOREWORD

SECTION I WELCOME



DIRECTOR ASEM EDUCATION SECRETARIAT

Dear ASEM members,

On behalf of the ASEM Education Secretariat, I would like to warmly

welcome you to three ASEM education dialogue and seminars: ASEM Dialogue of Quality Assurance and Recognition (QAR), ASEM International Seminar on Lifelong Learning (LLL), and ASEM International Seminar on Balanced Mobility hosted by the Ministry of Education Malaysia on 25-26 August 2014 in Kuala Lumpur. The three ASEM education events are initiatives conveyed by Malaysia at the 4th Asia-Europe Meeting of Ministers for Education (ASEMME4) in Kuala Lumpur, Malaysia 2013. As reported at the Intermediate Senior Officials' Meeting (ISOM) of Fifth Asia-Europe Meeting of Ministers for Education (ASEMME5) on 7-9 May 2014 in Hangzhou, China, Malaysia is fully prepared for the events.

(i) The ASEM Dialogue of Quality Assurance and Recognition will be organized by the Malaysia Qualifications Agency (MQA) in cooperation with the Ministry of Education Malaysia. The dialogue aims to discuss, share and exchange views, and strengthen collaboration in the field of quality assurance and recognition among ASEM members.

(ii) The ASEM International Seminar on Lifelong Learning is considered as a part of Malaysia's global initiatives in sharing best

practices on lifelong learning. The seminar is expected to be an effective strategy on the challenges of changing labour market and competencies enhancement to be formulated.

(iii) Malaysia showed their willingness to address the challenges of balancing mobility of students, academicians and researchers between Asia and Europe by proposing AEI-ASEM Summer Camps. ASEM International Seminar on Balanced Mobility is designed as one of the steps towards enriching the proposal.

I am convinced that the ASEM dialogue and seminars of QAR, LLL, and Balanced Mobility will have an interesting discussion. There is no doubt that the outputs will become the stepping stone of further cooperation and collaboration among ASEM members in higher education area between Asia and Europe on ASEM Education Process.

I wish you all to have a successful dialogue and seminars in Kuala Lumpur, August 2014.

(PROF. ARIS JUNAIDI)

PREFACE



SECRETARY GENERAL II , MINISTRY OF EDUCATION MALAYSIA

I take great pleasure in extending a warm welcome to our distinguished guests and delegates of the ASEM

International Seminar on Lifelong Learning, ASEM International Seminar on Balanced Mobility and ASEM Dialogue on Quality Assurance and Recognition. The organisation of these seminars and dialogue is a joint effort between the Ministry of Education Malaysia, ASEM Education Secretariat, ASEM Lifelong Learning Hub (ASEM LLL Hub), University of Malaya, Universiti Kebangsaan Malaysia and the Malaysian Qualifications Agency. I am optimistic and believe that these seminars and dialogue would provide a good platform to discuss common key issues and best practices that could be emulated by ASEM member countries and further enhance the cooperation in the field of higher education especially in lifelong learning, balanced mobility and quality assurance and recognition.

The dynamics of education in the fast changing globalized world has created new stimuli and changing directions for all of us. These new directions and trends including educational mobility, changes in instruction and learning and, above all, the utilization and growing dependency on technology, pose unprecedented challenges to the progress of education and the way they are to be applied to quality assurance. ASEM has indeed provided and continued to provide a concrete foundation for productive dialogues and

collaborations between Asia and Europe in addressing quality assurance and recognition. I believe that improving mutual recognition of higher education qualifications is a key factor for a more balanced mobility to attract more European students to study in Asia. This depends on better information flows regarding the quality of higher education in receiving countries. Through quality assurance and recognition, I believe we can have proper balanced mobility of students and academicians between Asia and Europe. Malaysia is also committed to lifelong learning initiatives undertaken by the ASEM LLL Hub as well as those in cooperation with UNESCO and other international organisations. Malaysia looks forward to the recommendation of good practices such as creation of learning communities and opportunities, funding mechanisms and incentives and sharing of research findings to promote lifelong learning within Asia and Europe.

I wish all delegates a very warm welcome and a pleasant stay in Malaysia. Thank you.

(DATO' SERI IR. DR. ZAINI BIN UJANG)

**SECTION II:
SEMINAR/DIALOGUE INFORMATION****Seminar/Dialogue in Brief**

The history of the ASEM education process started in 2006 during the 6th ASEM summit in Helsinki, Finland, when the heads of State and Government of the 27 European Union and 16 Asian ASEM member countries together with the European Commission and the ASEAN Secretariat agreed to establish “a continued dialogue and exchange of best practices on questions related to education and training”. The ASEM dialogue addresses political, economic and cultural issues, with the objective of strengthening the relationship between the two regions, in a spirit of mutual respect and equal partnerships.

During the 3rd Meeting of the Ministers for Education of the ASEM countries (ASEMME 3) in Copenhagen on 9 and 10 May 2011, four main topics were discussed and introduced by the speakers of different ASEM members:

- Quality assurance and recognition
- Engaging business and industry in education
- Balanced mobility
- Lifelong learning including vocational education and training

This year the Ministry of Education Malaysia will host the ASEM International Seminar on Lifelong Learning, ASEM International Seminar on Balanced Mobility and ASEM Dialogue on Quality Assurance and Recognition. This is an opportunity for in-depth discussion on these topics among Asian and European higher education institutions and quality assurances stakeholders, experts and business/industry stakeholders; to present, share recent developments in Lifelong Learning, Balanced Mobility and Quality Assurance and Recognition cooperation between regions and to discuss different approaches in building successful collaborations.

ASEM International Seminar on Balanced Mobility

Inter-regional exchanges of staff and students can lead to an increase in an internationally trained and experienced labour force which facilitates new partnerships in Asia and Europe. However, student mobility between both regions is notably imbalanced. In the on-going efforts by ASEM to further promote the cooperation between Malaysia and ASEM members, the Fourth ASEM Meeting of Ministers for Education (ASEMME4) held in Kuala Lumpur in May 2013 had concluded, among others that, the Ministers,

“Welcome the willingness of Malaysia and its Asia-Europe Institute (AEI) at the University of Malaya to develop, in cooperation with other

interested ASEM members, a strategy on better balancing mobility of students, academicians and researchers between Asia and Europe. The strategy would include proposals for concrete activities to overcome the imbalance in mobility between the two regions”.

Balanced Mobility has been a subject of considerable interest both within and outside ASEM in view of the primary objective of trying to get more European students and researchers at tertiary level to continue studies and/or do research in Asia. AEI, therefore very much welcomes all ASEM delegates to the seminar from which Malaysia and other ASEM member countries look forward to having Balanced Mobility gaining further steps forward.

ASEM International Seminar on Lifelong Learning

Lifelong learning has been an important agenda in the ASEM Education Process from the very beginning and it will be given special attention in the years to come. In a rapidly changing world, the work-force in Asia and Europe, as in other parts of the world, faces the challenges of meeting the needs of a changing labour market and of updating their skills and competencies throughout their lives. Enhancing the employability for citizens in both regions, especially in times of economic crisis could be done through open personal growth, continuing professional development and lifelong learning. National and regional qualifications frameworks supporting the permeability of the different education and training sectors have gained increasing significance in this area. These are equally key aspects of fostering social inclusion in complex societies, whereby lifelong learning is fundamental for creating sustainable communities and active citizens able and willing to participate in shaping the world in which they live.

The Seminar is also a forum for ASEM LLL Hub’s researchers to share the latest results of their Asia-Europe joint research projects with academic community and ministerial representatives from ASEM member countries. The main objectives of the seminar are:

- To share knowledge and enhance understanding of the concept and the role of lifelong learning;
- To exchange perspectives, good practices in developing and implementing lifelong learning strategies in different ASEM countries;
- To strengthen academic cooperation in LLL research between ASEM universities, hence enhancing research capacity and broaden perspectives for ASEM researchers in the field;
- To facilitate critical dialogues between researchers and policy makers in order to develop research-based policies and enhance the implementation of lifelong learning initiatives.

ASEM Dialogue on Quality Assurance and Recognition

‘Quality assurance and recognition’ is one of the main agendas of ASEMME that supports mobility in higher education in Asia and Europe regions. The diversity in methods and systems used for quality assurance and recognition requires more platforms to be established for discussions and exchanges to strengthen understanding and transparency in its implementation.

Realizing its importance for nurturing confidence and facilitating academic recognition, acceptance and exchanges, a regular dialogue in the field of quality assurance and recognition was reaffirmed during the ASEMME4 as it is seen as one of the strategies to fulfil the above objective in order to boost and strengthen the Asia-Europe education process.

This dialogue is an important medium for all ASEM stakeholders to further enhance the existing collaboration as well as to exchange ideas and provide feedback on current policies and ongoing initiatives in relation to recognition, quality assurance and cross border higher education. It will also provide a platform for discussions on how both regions could establish a parallel quality, standards and outcomes in order to address the fast changing global trends as well as to look into the possibility of mutual recognition between both regions.

The Malaysian Qualifications Agency in cooperation with the Ministry of Education is honoured to host the ASEM Dialogue on Quality Assurance and Recognition and welcomes all ASEM delegates to participate towards supplementing and enriching this dialogue.

Seminar/Dialogue Highlights

What	When	Details	Where
Opening Ceremony	Monday, 25 August 2014	Open to all registrants	Dewan Tun Dr Ismail, PWTC
Welcome Dinner	Monday, August 25 2014	Open to all registrants	The Grand Ballroom, Sunway Putra Hotel
Registration of new participants at AEI-UM	Tuesday, 26 August 2014	New Participants	Asia-Europe Institute UM
Visit LLL institutions	Tuesday, 26 August 2014	Open to all registrants Refer to daily schedule	Community College Selayang & Open University
LLL Research Network Meetings	Tuesday, 26 August 2014	Refer to daily schedule	Bilik Sabah, Bilik Sarawak, Bilik Selangor

Balanced Mobility Bilateral Discussion	Tuesday, 26 August 2014	Refer to daily schedule	Dewan Tun Dr Ismail, PWTC
Closing Ceremony	Tuesday, 26 August 2014	Refer to daily schedule	Dewan Tun Dr Ismail, PWTC

Seminar/Dialogue Support Services

Venue

This year ASEM International Seminar on Lifelong Learning, ASEM International Seminar on Balanced Mobility and ASEM Dialogue on Quality Assurance and Recognition will be held in 2 different venues.

ASEM International Seminar on Lifelong Learning and ASEM International Seminar on Balanced Mobility - Putra World Trade Centre (PWTC)
41, Jalan Tun Ismail,
50480 Kuala Lumpur, Malaysia.
Tel: (603) 2614 6999
Fax: (603) 404 33777
Email: pwtc@pwtc.com.my

ASEM Dialogue on Quality Assurance and Recognition - The Grand Ballroom,
Sunway Putra Hotel

Putra World Trade Centre (PWTC)

PWTC is within easy walking distance of a mall, restaurants and entertainment centres. It is situated next to KL's Golden Triangle, and only 45 minutes from the Kuala Lumpur International Airport. The venue is highly accessible through road, rail (LRT and KTM), and is serviced by frequent bus and taxi services.

With 2 international hotels within the building, plus a host of accommodation choices encompassing quality 3 to 5-star hotels in the surrounding area, visitors from out-of-state will find themselves right at home. PWTC provides 2,000 parking bays in a multi-level car park which is accessible via 2 entrances.

Sunway Putra Hotel

9th Floor, Sunway Putra Place,
100 Jalan Putra,
50350 Kuala Lumpur.
Tel: +603 4042 9888
Fax: +603 4043 0700
Toll free: +6 1 800 88 3390

Located opposite Putra World Trade Centre, Sunway Putra Hotel Kuala Lumpur is inside the city's main commercial district. Important transportation services are easily accessible, such as a two-minute walk to the PWTC LRT station, and guests can easily visit all the prominent areas in Kuala Lumpur with ease.

Accommodation

Seri Pacific Hotel is the designated official accommodation for the participants of the seminar whereas Sunway Putra Hotel for the participants of the dialogue.

Seri Pacific Hotel
Jalan Putra, PO Box 11468,
50746 Kuala Lumpur
Tel (603) 4042 5555
Fax (603) 4041 7236

Sunway Putra Hotel
9th Floor, Sunway Putra Place,
100 Jalan Putra,
50350 Kuala Lumpur.
Tel: +603 4042 9888
Fax: +603 4043 0700
Toll free: +6 1 800 88 3390

Seminar/Dialogue Information Centre

A stop by centre for answers to general question about the seminar and information on schedule changes is located at Bilik Johor/Kedah, PWTC. Please contact +601 9576 9691 for inquiries. The Secretariat of ASEM Dialogue on Quality Assurance and Recognition is located at The Grand Ballroom, Sunway Putra Hotel.

Transportation – Getting Around Kuala Lumpur**Train**

Express Rail Link Sdn. Bhd. operates both the KLIA Ekspres and the KLIA Transit lines, which connect the airport to the city centre at the KL City Air Terminal (KL CAT) in KL Sentral.

KLIA Ekspres

KLIA Ekspres is the fastest way to travel to the city, as the journey only takes 28 minutes non-stop. The train is equipped with comfortable seats, digital entertainment, a wheelchair seat restraint, a wheelchair-friendly washroom, and luggage racks.

Normal Fares:

Journey	Adult	Child
One-Way	RM 35.00	RM 15.00 (2 - 12 years old)
Return	RM 70.00	RM 30.00 (2 - 12 years old)

Service Schedules:

First Train	5:00 am
Last Train	12.30 am (from KL Sentral) 1:00 am (from KLIA)
Frequency	Every 15 minutes during peak hours (6:00 am - 9:00 am and 4:00 pm - 10:00 pm)
	Every 20 minutes during off-peak hours (5:00 am – 6:00 am, 9:00 am - 4:00 pm and 10:00 pm - 12 midnight)
	Every 30 minutes after midnight

KLIA Transit

The KLIA Transit is a commuter service with stops at 3 intermediate station:

1. Bandar Tasik Selatan
2. Putrajaya & Cyberjaya
3. Salak Tinggi

It departs every 30 minutes, with a journey time of 35 minutes from KLIA to KL Sentral.

For more information, please visit www.KLIAekspres.com or call the following numbers:

General Number: (603) 2267 8088

Customer Enquiry Number: (603) 2267 8000

KUALA LUMPUR TRANSIT MAP

www.malaysiaexpat.com

November 2006



To and from the airport

Kuala Lumpur International Airport (KLIA) is about 70km south of the city centre. If you are near to KL Sentral or can get there easily, the fastest way is the high-speed KLIA Ekspres train, which costs RM35 and takes 28 minutes.

If you are far from the centre of town, a taxi may be easier or faster. Fare and journey time depend on distance and traffic, but a typical trip costs RM65 and takes one hour.

AirAsia flights use the Low-Cost Carrier Terminal (LCCT), which is not served by the train. Skybus routes from KL Sentral to LCCT cost RM9 and take 70 minutes.

- KL Monorail**
6am – 11:30pm
www.monorail.com.my
Travel time Titivangsa – KL Sentral: 19 min.
- Kelana Jaya Line (or "Putra" line)**
6am – 11:30pm
www.rapidkl.com.my
Travel time Kelana Jaya – Terminal Putra: 45 min.
- Ampang/Sri Petaling (or "Star" line)**
6am – 11:15pm
www.rapidkl.com.my
Travel time Sentul Timur – Ampang: 31 min.
- KLIA Ekspres/Transit**
5am – midnight
www.kliaekspres.com
Travel time KL Sentral – KLIA (Airport): 28 min.
- KTM Sentul – Klang**
5:40am – 10:30pm
www.ktmb.com.my
Travel time Sentul – Port Klang: 81 min.
- KTM Seremban – Rawang**
5:40am – 10:30pm
www.ktmb.com.my
Travel time Seremban – Rawang: 125 min.

- Normal station
- Nearby attractions See guide below map.
- End of line
- ⊕ Future station
- ⊙ Interchange Stations from two lines are directly adjacent. Because the KL transit system is not integrated, you will still need to exit one station and enter another, and purchase a new ticket (except when transferring between KTM's Klang and Seremban lines, or between the Ampang and Sri Petaling branches at Chan Sow Lin).
- ⋯ Nearby station Stations from two lines are within close walking distance.

SIGHTS NEAR THE STATIONS

Bukit Bintang

The monorail station is in the middle of the neighbourhood of the same name, known for shopping and vibrant nightlife. For no-nonsense Chinese food, check out dozens of sidewalk restaurants on Jalan Alor, open from 6pm until late.

Bukit Nanas

A short but strenuous walk up the hill takes you to the base of KL Tower, the highest structure in the city, offering panoramic views in all directions. Or, walk a few minutes east on Jalan Sultan Ismail to Jalan P Ramlee, where the nightclubs keep thumping until 3am.

Chow Kit

During daylight hours a huge, rambling covered market is alive with all sorts of fresh food, including many fruits and vegetables you've almost certainly seen before. Other sections of the market

focus on clothes and music. You'll also find a number of Indonesian restaurants near here.

KLCC

The station opens into the base of the Petronas Twin Towers, Kuala Lumpur's emblematic landmark. Behind the building is KLCC Park, a nice place to take children or enjoy the nightly fountain show.

Kuala Lumpur

The original main train station until the opening of KL Sentral a few years ago, this fanciful building is an attraction in itself. A few minutes' walk away is the National Mosque, and just a few minutes more will take you to Lake Gardens, where you can visit the Bird Park and Butterfly Garden. Keep your eyes open in Lake Gardens in the late afternoon, and you may run into some monkeys.

Maharajalela

Just a few minutes' walk from the Petaling Street market in Chinatown, famous for low-priced knockoff goods and good Chinese food.

Masjid Jamek

The mosque this station is named after is a classic example of the Moorish-British-Malay style that dominates many of KL's historic buildings. It's very close to Little India, an interesting area any day of the week — and a must-see on Saturday nights, when a half-mile-long Malay street market runs until 10pm.

MidValley

No culture here; just shopping, and lots of it. The Mid Valley Megamall is one of Asia's largest malls, and a good place to soak up some air conditioning and watch Malaysians prowling for bargains.

Pasar Seni

Central Market is a one-stop headquarters for local crafts and souvenirs.

Piazza Rakyat

This station connects to Hentian Puduaya (Pudu bus station), where you can find buses to major cities in western peninsular Malaysia, as well as to Singapore and Thailand. It's also very close to Petaling Street (see Maharajalela).

Putrajaya

Gleaming Putrajaya is a must for anyone interested in modern architecture. The city features dramatic bridges, one of Malaysia's most beautiful mosques, and many other interesting structures.

Putra/PWTC

Putra bus terminal links KL with cities in eastern peninsular Malaysia.



Emergency Call Centre: 1-800-88-3255

Disaster Relief 24 hours

Coordinator: Rescue Squad, the Department of Enforcement

Address: Skuad Penyelamat
Jabatan Penguatkuasaan
Jalan Tun Ismail, 50350 Kuala Lumpur

Tel: 603-4026 7222
603-4024 4424

DAILY SCHEDULE

ASEM INTERNATIONAL SEMINAR ON LIFELONG LEARNING

SUNDAY, 24 AUGUST 2014

1400 - 1800 Registration (Seri Pacific Hotel Lobby)

DAY 1: MONDAY, 25 AUGUST 2014

0830 – 0915 Registration (PWTC)

0915 – 1000 Opening Ceremony at Dewan Tun Dr Ismail, PWTC

1000 – 1030 Tea Break and Photography Session

**1030 – 1100 Keynote Address:
National Policies on LLL: Issues, Challenges and the Way Forward
Y.B. Dato' Seri Idris Bin Jusoh, *Hon. Minister of Education II, Ministry of Education Malaysia***

1105 – 1115 Photography Session

**1115 – 1245 Forum (Asia-Europe):
Collaborative Effort in Promoting LLL: Issues, Challenges and the
Way Forward**

Airport Taxi

(Operated by Airport Limo (M) Sdn. Bhd.)

Airport Limo offers taxi and limo services from Kuala Lumpur International Airport to selected areas in Kuala Lumpur and Selangor.

There are 4 types of taxis for you to pick from:

Type of Taxi/Limo	Model	Capacity
Budget taxi	Deawoo Tacuma	3 to 4 passengers only
	Proton Wira	3 passengers only
Premier Limo	Renault Enviro	4 to 5 passengers only
	Mercedes E220	4 passengers only
Super Luxury	Jaguar S-type	3 passengers only
Family Service	Kia Pregio Van	8 passengers only

Coupons for taxis and limos can be obtained at the Airport Limo counters at:

Arrival Hall, Main Terminal Building

1. International Arrival Hall (just after Customs, before the public arrival area)
2. Domestic Arrival Hall (public area after Domestic Baggage Clearance)
3. Domestic Baggage Reclaim, Arrival Level

For information on RATES and BOOKING , please contact Airport Limo (M) Sdn. Bhd. at the following numbers:

1. Journey to KLIA

Tel: (603) 9223 8080 (8.00 am - 12.00 am)

Tel: (603) 8787 3030 (12.00 am - 8.00 am)

2. Journey from KLIA (Meet & Greet Service)

Tel: (603) 8787 3678 (24 hours)

Fax: (603) 8787 3588

3. Hunting Line Airport Limo

Tel: 1-300-88-8989

Prof. Dr. Noraishah Buang, *Deputy Dean, Faculty of Education, Universiti Kebangsaan Malaysia*
Tan Sri Anuwar Ali, *President Open University of Malaysia (OUM), Malaysia*

Mr. Claus Holm, *Chair of ASEM Education and Research Hub for Lifelong Learning (ASEM LLL Hub)*

Prof. Dr. Arne Carlsen, *Director of UNESCO Institute for Lifelong Learning (UIL)*

1245 – 1400 Lunch

1400 – 1600 Plenary Session 1:

Nearest Clinics/Hospitals:

1. Hospital Kuala Lumpur
Jalan Pahang, 50586 Kuala Lumpur
(603)-2615 5555
2. Damai Service Hospital
Jalan Ipoh, 51200 Kuala Lumpur
(603) 4043 4900
3. Roopi Medical Centre Sdn Bhd
No. 86, Jalan Datuk Haji Eusoff,
50400 Kuala Lumpur
(603) 4042 3766
4. Hospital Lourdes
No. 244, Jalan Ipoh,
51200 Kuala Lumpur
(603) 4042 5335
5. Hospital Sentosa Medical Centre
No. 36, Jalan Cemur,
50400 Kuala Lumpur
(603) 4043 7166
6. Lee Clinic
No. 71, Jalan Haji Hussein,
50300 Kuala Lumpur
(603) 2693 0407
7. Hospital Aman
No. 177, Jalan Ipoh,
51200 Kuala Lumpur
(603) 4042 8260

National Strategies for Lifelong Learning

Dr. Allie Clemans, *Senior lecturer in the Faculty of Education at Monash University, Australia*

Plenary Session 2:

Intensification of Online Learning: Formulating Effective Strategies and Policies - Issues and Challenges

Prof. Dr. Mohamed Amin Embi, *Director, Centre for Teaching Excellence and Learning Technology, Universiti Kebangsaan Malaysia (UKM), Malaysia*

Prof. Dr. Mansor Fadzil, *Senior Vice President, Open University Malaysia, Malaysia.*

1600 - 1630

Coffee Break

1630 - 1745

Chair: Prof. Dr. Nooreiny Maarof, *Faculty of Education, Universiti Kebangsaan Malaysia*

Plenary Session 3:

Plenary Session 4:

Industry and Community Participation in LLL and Collaboration with Service Providers

Dato' Amir Bin Md Noor, *Director General, Department of Community College Education, Ministry of Education Malaysia*

2000 – 2200

Welcome Dinner

DAY 2: TUESDAY, 26 AUGUST 2014

0830 – 1030

Parallel Workshops

Workshop 1:

National Strategies for Lifelong Learning

Facilitator: Dr. Allie Clemans, Australia; *Senior lecturer in the Faculty of Education at Monash University in Australia*

Prof. Atsushi Makino, Japan; *Professor of Lifelong Learning in Graduate School of Education, The University of Tokyo, Japan*

Jin Yang, UIL; *Senior Programme Specialist at the UNESCO Institute for*

Lifelong Learning (UIL)

Workshop 2:

Intensification of Online Learning: Formulating Effective Strategies and Policies - Issues and Challenges

Facilitator: Prof. Dr. Mansor Fadzil, Malaysia; *Open University Malaysia*

Prof. Mie Buhl, *Aalborg University, Denmark*

Prof. Bowon Kim, *Korea National Open University (KNOU), Korea*

Workshop 3:

Developing Workplace Learning: Workplace as Learning Spaces

Facilitator: Dr. Pier Paolo Pasqualoni, *University of Innsbruck, Austria*

Areeya Rojvithee, *Freelance Consultant on HRD, Migration, Labour Affairs, Gender and Skill Development, Thailand*

Assoc. Prof. Dr. Ruhizan Mohammad Yasin, *Head of Educational Evaluation Centre, Faculty of Education, Universiti Kebangsaan Malaysia*

Assoc. Prof. Dr. Milan Pol, *Chair of the Department of Educational Sciences and Vice-dean for Science and Doctoral study programmes at the Faculty of Arts, Masaryk University, Czech Republic*

1030 – 1100

Coffee break

1100 – 1200

Presentation of Workshop Findings at Dewan Tun Dr Ismail B, PWTC

Workshop 1:

National Strategies for Lifelong Learning

Dr. Allie Clemans, *Australia; Senior lecturer in the Faculty of Education at Monash University in Australia*

Workshop 2 : Intensification of Online Learning: Formulating Effective Strategies and Policies: Issues and Challenges

Prof. Dr. Mansor Fadzil, *Senior Vice President, Open University Malaysia, Malaysia*

Workshop 3:

Developing Workplace Learning: Workplace as Learning Spaces

Assoc. Prof. Dr. Chompoonuh K. Permpoonwiat, *School of Economics and Public Policy, Srinakharinwirot University, Thailand*

1200 – 1245

Closing Ceremony

Dato' Seri Ir. Dr. Zaini Bin Ujang, *Secretary General II, Ministry of Education Malaysia*

1245 – 1430	Lunch
1430 – 1700	Visit to Community College & Open University or
1430 - 1800	LLL Research Network (RN) Meetings: <i>RN1 (Bilik Sabah, PWTC)</i> <i>RN2 (Bilik Sarawak)</i> <i>RN4 (Bilik Selangor)</i>
	End of Seminar

DAILY SCHEDULE

ASEM INTERNATIONAL SEMINAR ON BALANCED MOBILITY

SUNDAY, 24 AUGUST 2014

1400 - 1800 **Registration (Seri Pacific Hotel Lobby)**

DAY 1: MONDAY, 25 AUGUST 2014

0800 – 0900 **Registration (PWTC)**

0915 – 1000 **Opening Ceremony at Dewan Tun Dr Ismail, PWTC**


1000 – 1100 **Tea Break and Photography Session**

1100 – 1145 **Session 1 (PWTC):**
Moderator: Tan Sri Ahmad Fuzi Razak, *Secretary General, World Islamic Economic Forum Foundation (WIEF)*
Keynote Address on ‘Asia-Europe Relations: Asian Perspective’:
Dr. Surin Pitsuwan, *Adjunct Professor of AEI, University of Malaya and Former Secretary General of ASEAN*

1145 – 1230 **Europe-Asia Relations: European Perspective**
Moderator: Tan Sri Ahmad Fuzi Razak, *Secretary General, World Islamic Economic Forum Foundation (WIEF)*
Professor Dr. Reimund Seidelmann, *Prof. ret. University of Giessen, Germany*

1230 – 1300 **Q & A**

- 1300 – 1400 **Lunch Break**
- 1400 – 1440 **Session 2 (PWTC):**
Moderator: Professor Datin Dr. Norhanom binti Abdul Wahab, *Dean, Institute of Graduate Studies, University of Malaya*
Keynote Address on ‘Balanced Mobility’: Professor Dato’ Dr. Mohd Amin Jalaludin, *Vice Chancellor, University of Malaya*
- 1440 – 1505 **Cross-cultural Mobility of Korea University, Seoul**
Moderator: Professor Datin Dr. Norhanom binti Abdul Wahab, *Dean, Institute of Graduate Studies, University of Malaya*
Professor Dr. Sung Jin Kang, *Vice President, International Affairs, Korea University*
- 1505 – 1530 **ASEAN Erasmus Mundus**
Moderator: Professor Datin Dr. Norhanom binti Abdul Wahab, *Dean, Institute of Graduate Studies, University of Malaya*
Professor Zita Mohd Fahmi, *Deputy Chief Executive Officer, Malaysian Qualifications Agency*
- 1530 – 1615 **Q & A**
- 1615 – 1645 **Coffee Break**
- 2000 – 2200 **Welcome Dinner**
- DAY 2: TUESDAY, 26 AUGUST 2014**
- 0800 (i) ASEM delegates/officials to board bus from the Hotel to AEI
(ii) Registration of new participants at AEI
- 0900– 0930 **Session 3 (AEI Auditorium, UM):**
University – Industry Partnership for Entrepreneurial Skills
Moderator: Mr. Murad Ali Abdullah, *Advocate & Solicitor, Messrs K’Mura & Co*
Dato’ Zurainah Musa, *Executive Director, Berjaya Corporation Berhad*
- 0930 – 0950 **The Value of Cross Cultural Experiences**
Moderator: Mr. Murad Ali Abdullah, *Advocate & Solicitor, Messrs K’Mura & Co*
Associate Professor Dr. Marco Buente, *Monash University, Malaysia*



0950 – 1030	Pilot Scheme “AEI-ASEM Summer Camp” Moderator: Mr. Murad Ali Abdullah, <i>Advocate & Solicitor, Messrs K’Mura & Co</i> Associate Professor Siti Rohaini Kassim, <i>Deputy Executive Director, AEI</i>
1030 – 1100	Q & A Rounding up Day 2
1100 – 1115	Coffee Break at AEI
1130	ASEM delegates/officials to board bus from AEI to the hotel
1215 – 1300	Closing Ceremony Dato’ Seri Ir. Dr. Zaini Bin Ujang, <i>Secretary General II, Ministry of Education Malaysia</i>
1300 – 1430	Lunch Break
1430	End of Seminar (Bilateral / Optional)

DAILY SCHEDULE

SUNDAY, 24 AUGUST 2014

1400 - 1800 Registration (at Sunway Putra Hotel)

DAY 1: MONDAY, 25 AUGUST 2014

0800 – 0900 Registration (PWTC)

0915 – 1000 Opening Ceremony at Dewan Tun Dr Ismail, PWTC

1030 – 1100 Tea Break and Photography Session

1100 – 1300 Interactive Round Table 1:
Regional Quality Assurance Framework and Regional Qualifications
Framework – Commonalities and Differences

Chair: Dr. Karena Maguire, *Head of Quality Assurance Services, Quality and Qualifications Ireland (QQI)*

- (i) **Regional Quality Assurance Framework – Interregional Recognition of Quality Assurance Agencies:**
- **European Standards and Guidelines (ESG)**

Mr. Josep Grifoll, *Vice-President, European Association for Quality Assurance in Higher Education (ENQA)*

- **ASEAN Quality Assurance Framework in Higher Education (AQAFHE)**

Professor Zita Mohd Fahmi, *Executive Secretary, ASEAN Quality Assurance Network (AQAN) and Chair of AQAFHE Task Force*

- (i) **Regional Qualifications Framework – Complexities, Demands and Impacts:**
- **European Qualifications Framework (EQF)**

Mr. Jens Bjornavold, *Senior Expert, European Center for the Development of Vocational Training (CEDEFOP)*

- **ASEAN Qualifications Reference Framework (AQRf)**

Ms. Teresita R. Manzala, *Chair of AQRf Task Force*

1300 – 1430

Lunch

1430 – 1600

Interactive Round Table 2:

Cross Border Higher Education

Chair: Dr. Achim Hopbach, *Managing Director, Agency for Quality Assurance and Accreditation Austria (AQ Austria)*

Evolution of Transnational Education

Assoc. Prof. Dr. Rozilini M. Fernandez-Chung, *Vice-President, HELP University, Malaysia*

New Approach on Regulating the Quality of Cross-border Education

Mr. Anthony McClaran, *Chief Executive Quality Assurance Agency for Higher Education (QAA), United Kingdom*

Cross Border Quality Assurance Network in Higher Education (CBQAN)

Dr. Lin Mengquan, *Director, Evaluation Department, China Academic Degrees & Graduate Education Development Center (CDGDC), China*

1600 – 1630 **Coffee Break**

2000 – 2200 **Welcome Dinner**

DAY 2: TUESDAY, 26 AUGUST 2014

0900 – 1045 **Interactive Round Table 3:
Strengthening Partnership and Cooperation in Implementing
Initiatives towards Facilitating Recognition**
Chair: Dr. Libertad P. Garcia, *Director IV, Commission on Higher
Education (CHED), Philippines*
ASEM Bridging Declaration – The Proposed Implementation
Mr. Wang Lisheng, *Deputy Director-General of the China Academic
Degrees and Graduate Education Development Center (CDGDC), China*
**Towards Interregional Credit Transfer – Credit Transfer Systems of
Asia and Europe**
Dr. Taiji Hotta, *Vice-Executive of International Affairs, International Center,
Hiroshima University, Japan*
**Comparability Exercise – Building Confidence to Support Recognition
of Quality Assurance and Qualification Systems**
Ms. Karen Chalmers, *Director, International and Policy, New Zealand
Qualifications Authority (NZQA)*
Professor Zita Mohd Fahmi, *Deputy Chief Executive Officer (Quality
Assurance), Malaysian Qualifications Agency (MQA)*
Recognition of Transnational Qualifications
Mr. Gong Wan, *Deputy Director-General, Chinese Service Center for
Scholarly Exchange (CSCSE), China*

1045 – 1100 **Tea Break**

1100 – 1145 **Plenary Session:
Sharing of Outcomes and Decisions**
Chair: Dato' Dr. Syed Ahmad Hussein, *Chief Executive Officer, Malaysian
Qualifications Agency (MQA)*
Dr. Karena Maguire, *Head of Quality Assurance Services, Quality and
Qualifications Ireland (QQI)*

Dr. Achim Hopbach, *Managing Director, Agency for Quality Assurance and Accreditation Austria (AQ Austria)*

Dr. Libertad P. Garcia, *Director IV, Commission on Higher Education (CHED), Philippines*

1200 – 1245

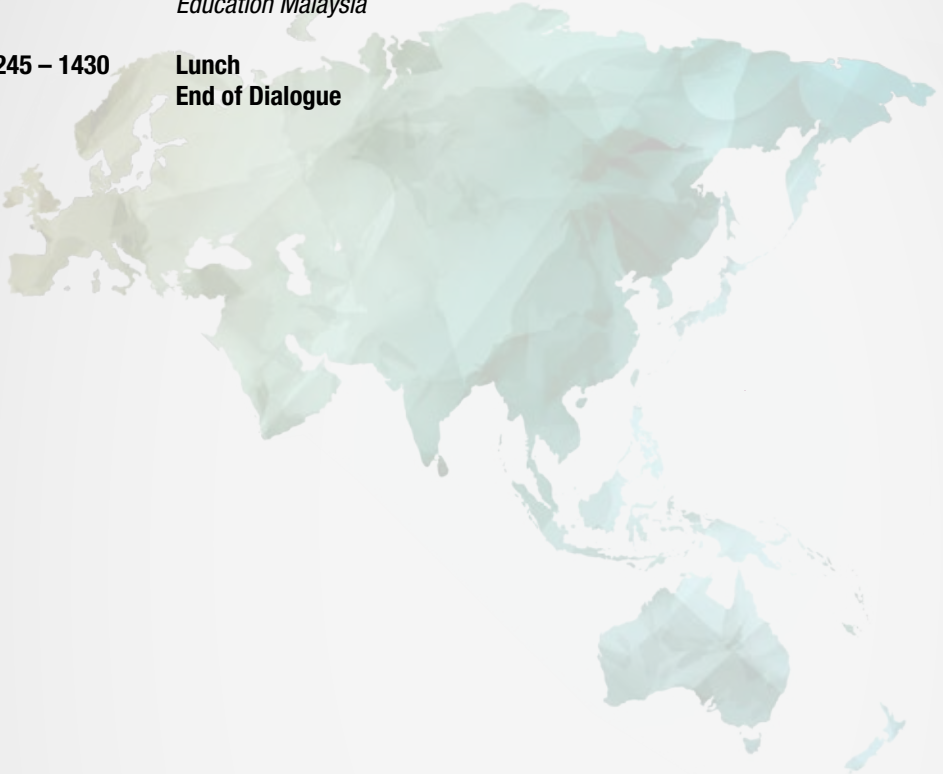
Closing Ceremony

Dato' Seri Ir. Dr. Zaini Bin Ujang, *Secretary General II, Ministry of Education Malaysia*

1245 – 1430

Lunch

End of Dialogue



SECTION III: A SNAPSHOT OF MALAYSIA'S EDUCATION

Merging of MOHE and MOE

On 15 May 2013, the Ministry of Higher Education merged with the Ministry of Education to form a single ministry under the new elected government led by Prime Minister YAB Dato' Sri Mohd Najib Bin Tun Haji Abdul Razak. The new ministry which regulates both education and higher education portfolios is named Ministry of Education (MOE).

With the merging of the two ministries, the National Higher Education Strategic Plan (PSPTN) formerly run by the Ministry of Higher Education is now incorporated and formed part of the Malaysian Education Development Plan 2013-2025 with the aim to make Malaysia an education hub comparable to any developed country.

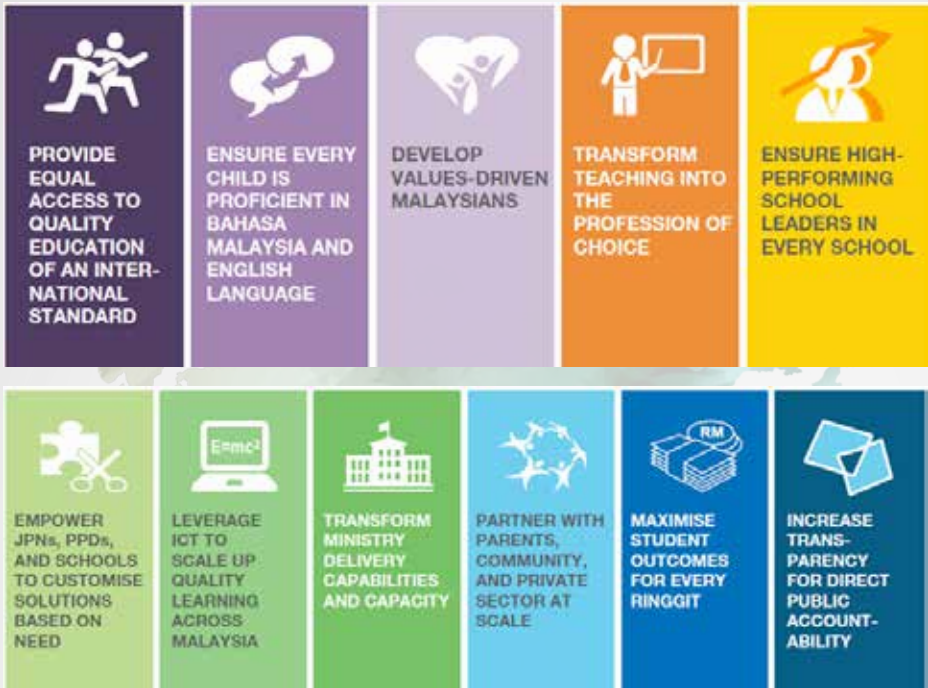
Merging is indeed a good move for the following reasons:

- i. Reorganisation of resources allows for greater efficient use of resources and mobilization to avoid duplication of functions;
- ii. Seamless & continuity of policies;
- iii. Ease of dealing with international collaborations and forum; and
- iv. A greater collection of diverse expertise and knowledge to better serve the entire education industry.

Malaysia Education Blueprint (2013 – 2025)

The Ministry of Education developed the Malaysia Education Blueprint 2013-2025 with the aim of providing high quality education to all students. The Blueprint is inspired by the views and ideas gathered from local and international research studies, education experts, teachers, parents and students. It is also integrated the aspirations and dreams of previous educational policies outlined in the Razak Report 1956, Rahman Talib 1960, Report of the Cabinet Committee to Review Educational Policy 1979, Education Act 1996 and Education Development Master Plan 2006-2010 (*Pelan Induk Pembangunan Pendidikan 2006-2010*).

Every child in Malaysia deserves the right to an education that enables them to be globally competitive and to contribute to the nation's prosperity. Every student who goes through the system should be equipped with knowledge, critical thinking skills, leadership skills, bilingual proficiency, ethics and spirituality whilst imbued with a strong sense of national identity. In order to realise these student outcomes, the Blueprint outlines five aspirations for the education system: access, quality, equity, unity and efficiency. To achieve these aspirations, the Ministry has outlined 11 shifts that will transform the country's education system as shown below.



Source: www.moe.gov.my

National Higher Education Strategic Plan (PSPTN)

Higher Education in Malaysia prevails since the establishment of the Ministry of Higher Education (MOHE) in 2004 (before merging with MOE in 2013). Since then the issues of higher education are gaining the attention of all parties or the media, the people and the government. The Ministry has introduced a range of policies for strengthening higher education so that there is a conducive ecosystem for leading the glory of knowledge. This also goes hand in hand with efforts to position Malaysia as a regional hub for higher education and become the preferred choice of international students and intellectuals in 2020.

In fact, there are 7 thrusts in PSPTN:



There are five pillars that have been emphasized in PSPTN; namely Governance, Leadership, Academia, Learning and Teaching, and Research and Development. All five pillars are to be used as CAPs (Critical Agenda Project), which is supported and integrated with other 18 CAPs which consist of:



Source: www.moe.gov.my

**SECTION IV:
ACKNOWLEDGMENT**

International Relations Division
Higher Education Sector,
Ministry of Education Malaysia

Planning, Research and Policy Coordination Division,
Higher Education Sector,
Ministry of Education Malaysia

Department of Higher Education
Higher Education Sector,
Ministry of Education Malaysia

Department of Polytechnic Education
Higher Education Sector,
Ministry of Education Malaysia

Department of Community College
Higher Education Sector,
Ministry of Education Malaysia

Malaysian Qualifications Agency
Ministry of Education Malaysia

University of Malaya
Ministry of Education Malaysia

Universiti Kebangsaan Malaysia
Ministry of Education Malaysia

Community College Selayang
Ministry of Education Malaysia

Pusat Perubatan Univerisiti Malaya
Lembah Pantai
59100 Kuala Lumpur

Polis Diraja Malaysia (PDRM)
Ibu Pejabat Polis (IPP) Bukit Aman
50560 Kuala Lumpur

Open University Malaysia
Jalan Tun Ismail,
50480 Kuala Lumpur,
Wilayah Persekutuan Kuala Lumpur

ASEM Education and Research Hub
Department of Education
Aarhus University
Tuborgvej 164
2400 Copenhagen NV
Denmark

Ministry Of Education would like to extend its sincere appreciation to all parties who have been involved directly or indirectly with the preparation of ASEM International Seminar on Lifelong Learning, ASEM International Seminar on Balanced Mobility and ASEM Dialogue on Quality Assurance and Recognition 2014.



Malaysian Qualifications Agency



Asia-Europe Institute, University of Malaya



Photo of Blue Print On LLL for Malaysia 2011-2020

NOTE:

