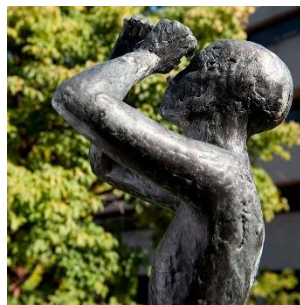


Chair Priorities ASEM LLL Hub



Asia-Europe Meeting
ASEM Education and Research Hub
for Lifelong Learning



Séamus Ó Tuama, PhD
Contact: sotuama@ucc.ie



ASEM SOM2 — BUCHAREST
May 14th 2019

**A TRADITION OF
INDEPENDENT
THINKING**





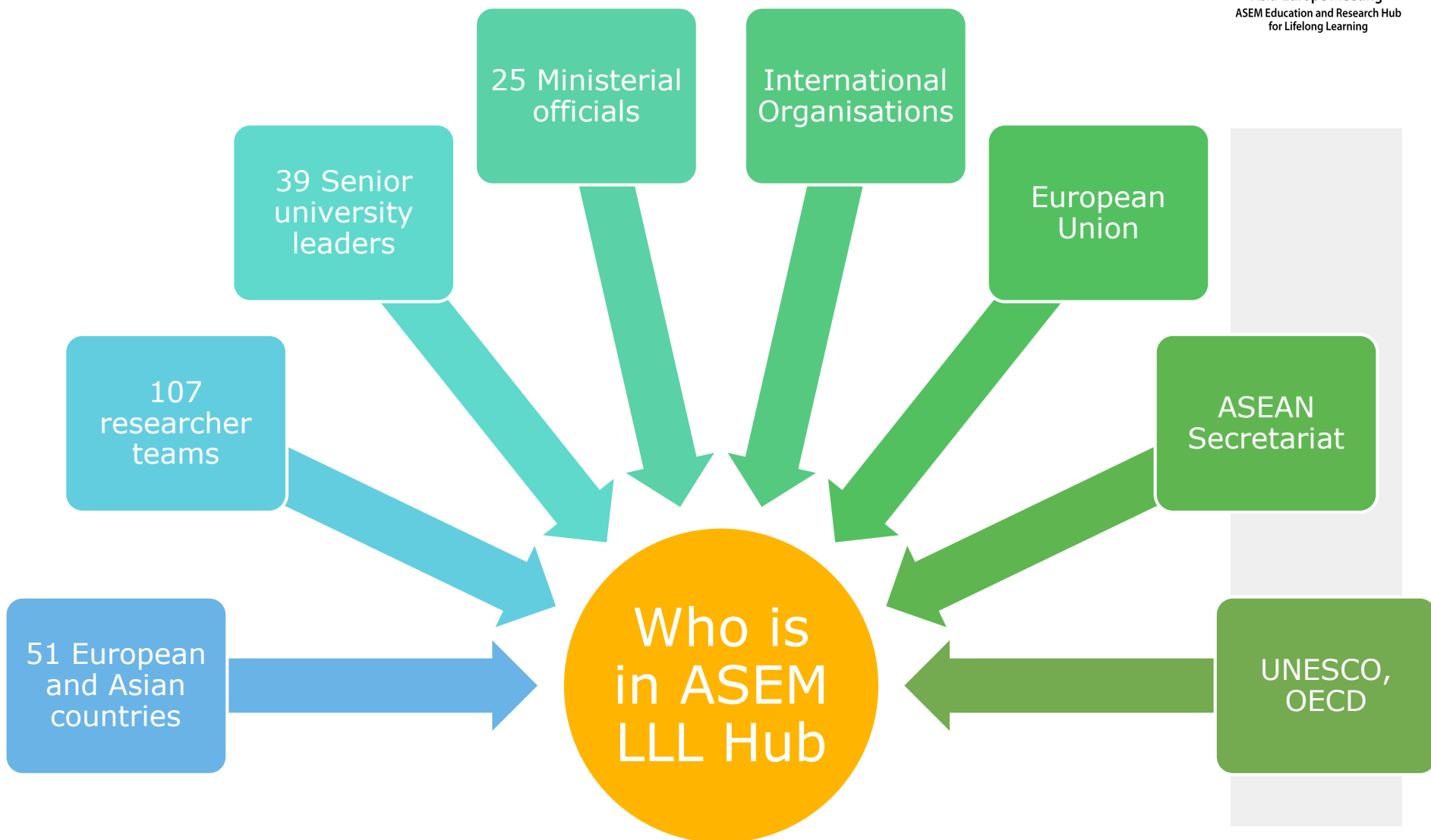
Asia-Europe Meeting
ASEM Education and Research Hub
for Lifelong Learning



Asia-Europe Meeting
ASEM Education and Research Hub
for Lifelong Learning

ASEM LLL
Hub is a
European-
Asian actor
facilitating:

- A multifaceted dialogue on research results, ideas and evidence,
- A platform for research-informed policy development,
- Engagement on future trends, challenges and solutions



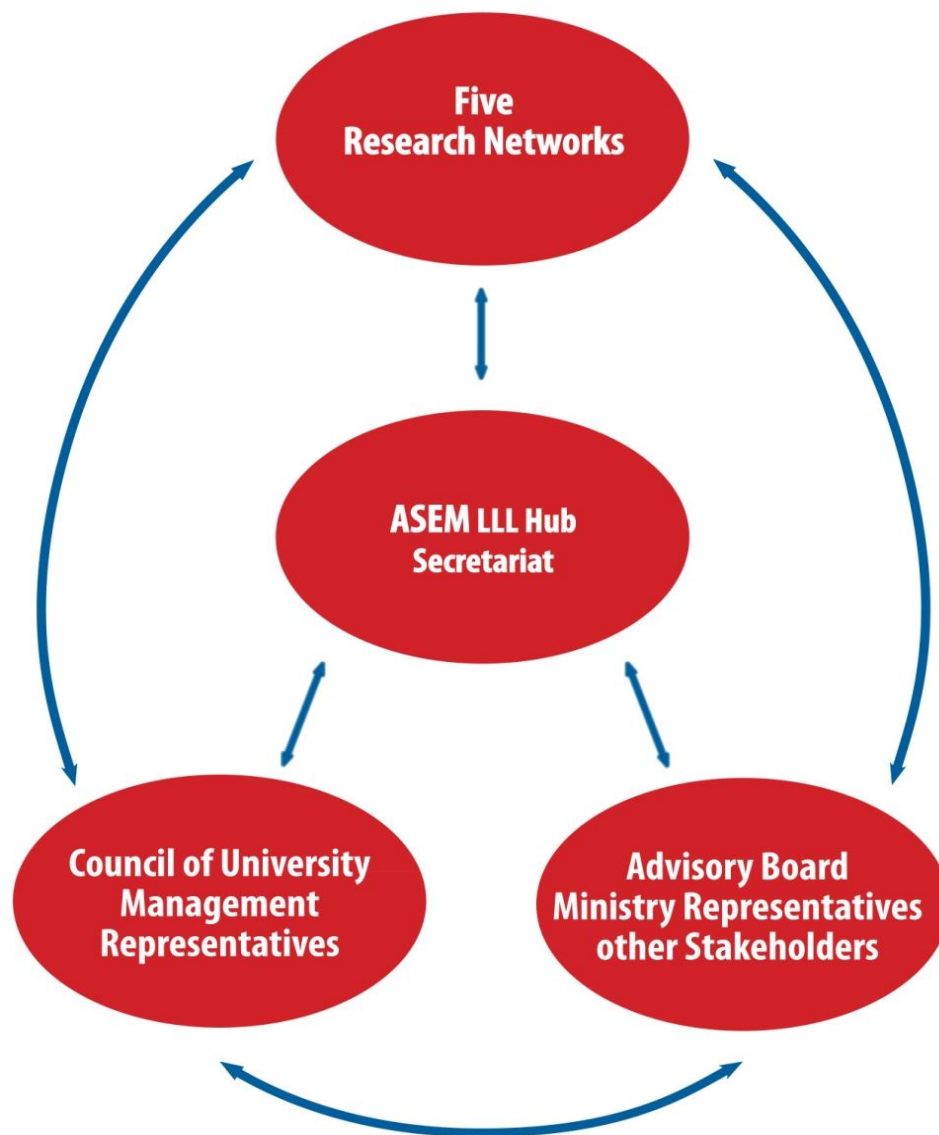


Asia-Europe Meeting
ASEM Education and Research Hub
for Lifelong Learning

Open Space Platform for Dialogue



Asia-Europe Meeting
ASEM Education and Research Hub
for Lifelong Learning





ASEM LLL Hub Stocktaking

Engage with
current five
networks

- Some very active
- Some may need impetus

Develop new
RN6 Learning
Cities

- Invitation to learning cities researchers

Review and
revitalize

- University Leadership council
- Senior Official and Stakeholder council

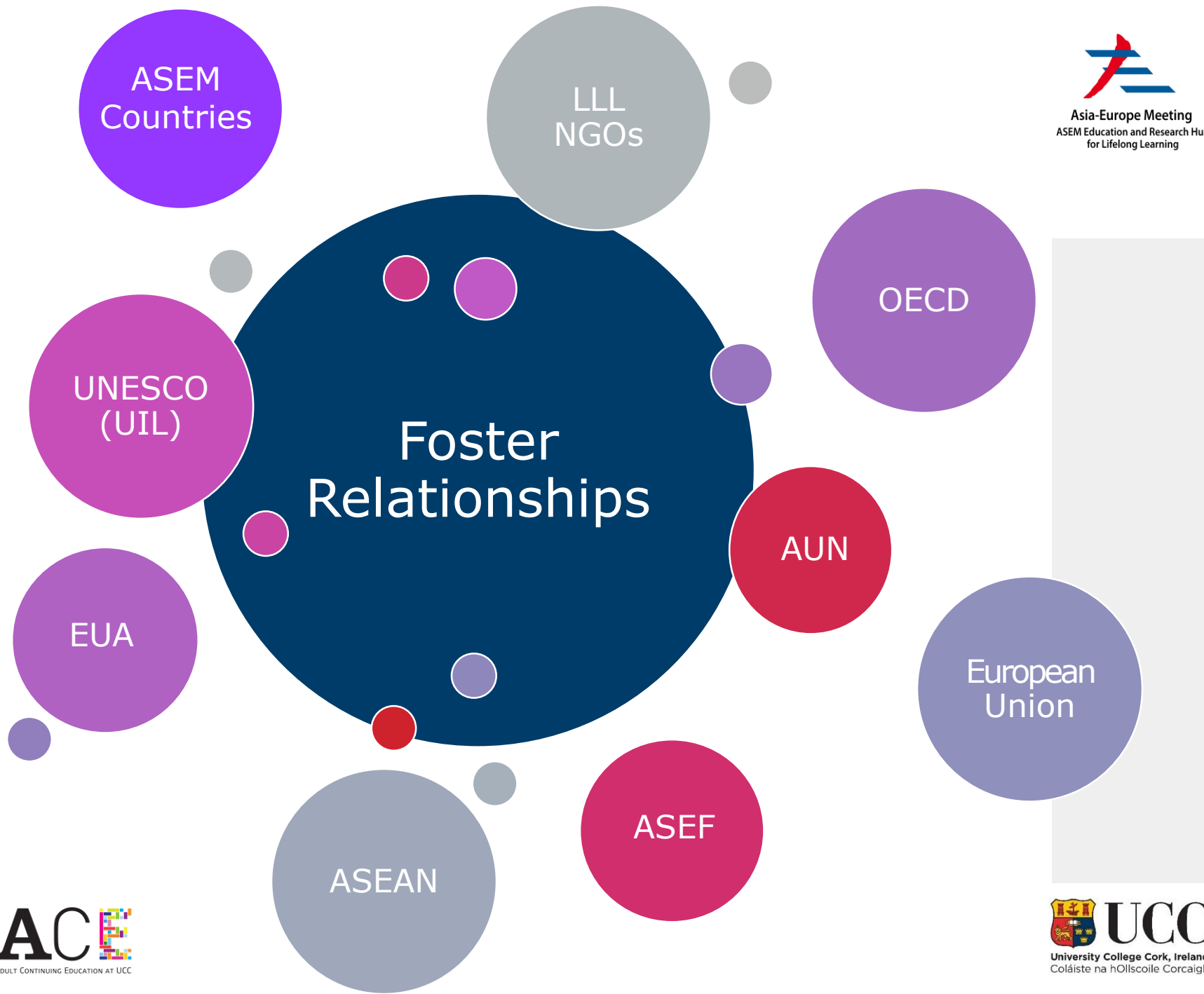
Priorities for 2019

Develop ASEM LLL Hub secretariat in
Cork, Ireland

Attend RN events

Identify
priorities
&
supports

Review and revitalize
evidence-based policy paper
production



Asia-Europe Meeting
ASEM Education and Research Hub
for Lifelong Learning

- Major event Spring 2020 Ireland
 - All networks show case
 - Advisory boards, senior officials, etc.
- ASEM LLL Hub road map 2020-2025
 - Link to global issues e.g. SDGs, ILO
 - Identify Asia-Europe priorities in LLL
 - Models to exchange best practice/research
 - Enhanced policy paper publication
 - Synergies between all six RNs
 - Country Case Studies/Reports
 - Support bi-lateral projects



Next Phase Request 2019-25

ASEM partner
countries

- €5-€10,000 per annum research staff mobility
- €5-€10,000 per annum research student mobility

Ireland

- Host Chair ASEM LLL Hub
- Host ASEM LLL Hub secretariat

